



Huawei P9 Lite Display Replacement

Replace the display of your Huawei P9 Lite.

Written By: Tobias Isakeit



INTRODUCTION

Use this guide to replace the display of your Huawei P9 Lite.



TOOLS:

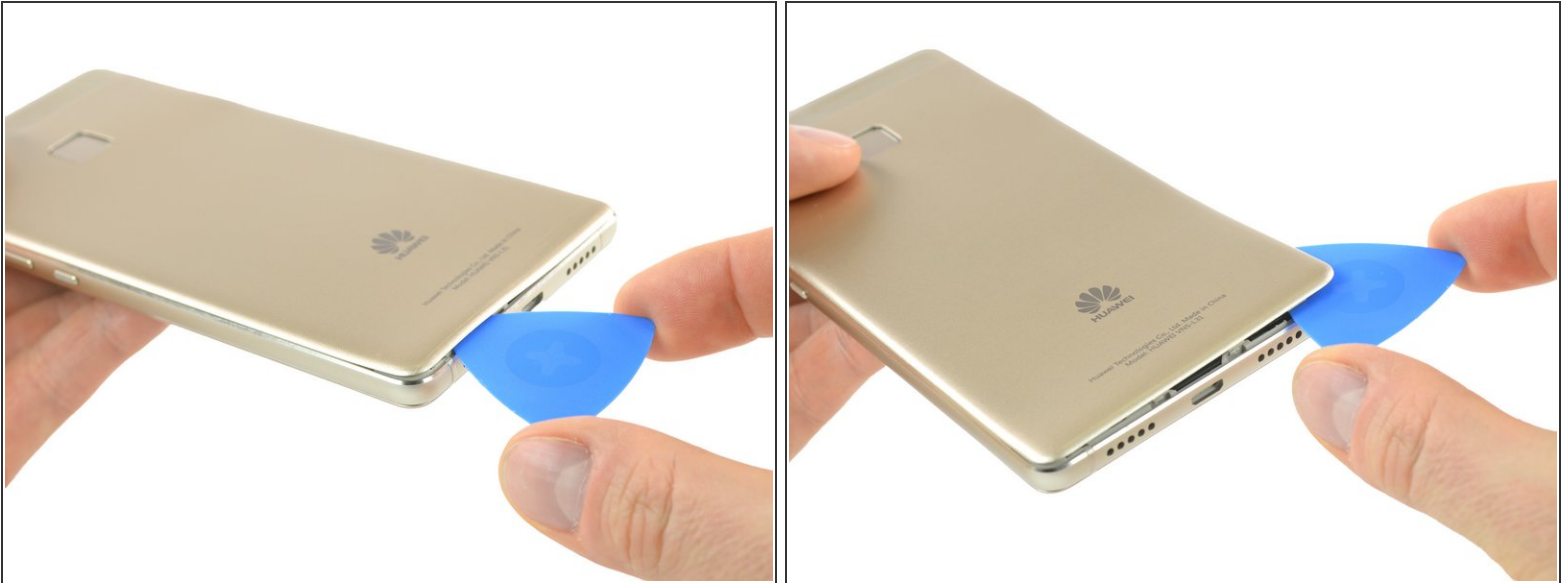
- [iFixit Opening Picks set of 6](#) (1)
- [Plastic Cards](#) (1)
- [Phillips #000 Screwdriver](#) (1)
- [Tweezers](#) (1)



PARTS:

- [Huawei P9 Lite LCD and Digitizer](#) (1)
- [Huawei P9 Lite Display Adhesive](#) (1)

Step 1 — Back Cover



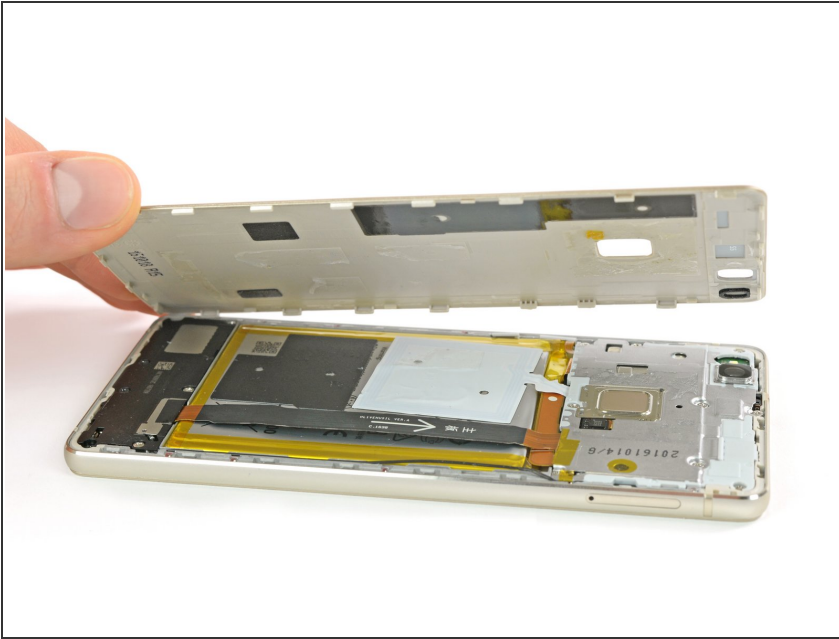
- Use an opening pick to unclip the rear cover, starting from the bottom corner.
- Work your way around counterclockwise and carefully pry the plastic tabs open one by one.

Step 2



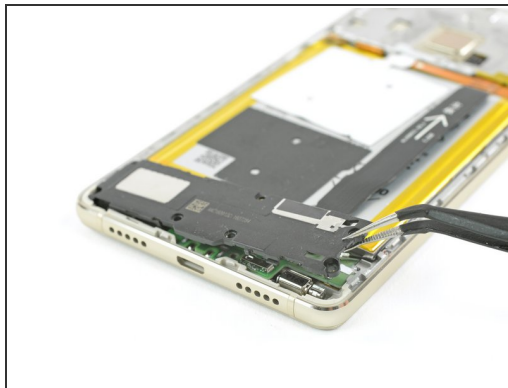
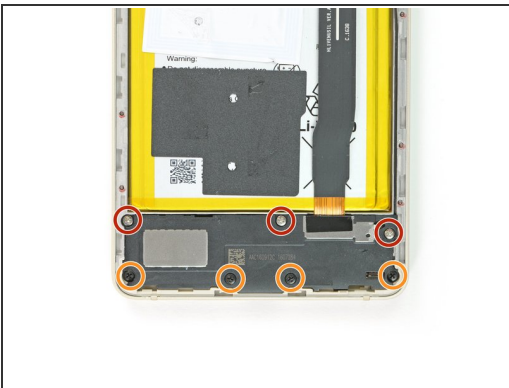
- ⓘ There is adhesive underneath the back cover that holds it to the battery and the metal plate at the top.
- ⚠ Be careful with the flex cable at the right hand side.
- Twist the opening pick to lever the back cover away and loosen it from the adhesive.

Step 3



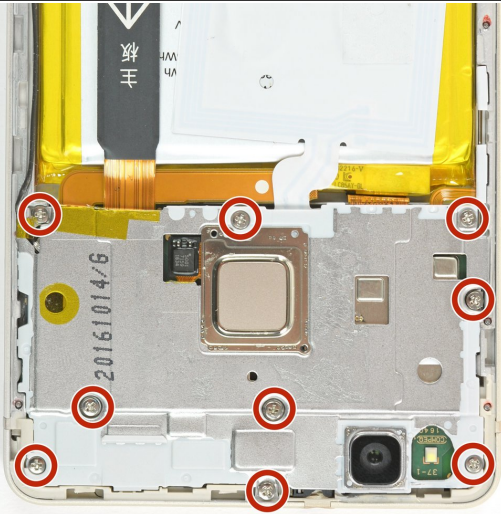
- When the back cover is freed from the adhesive you can pop it off by hand completely.

Step 4 — Loudspeaker



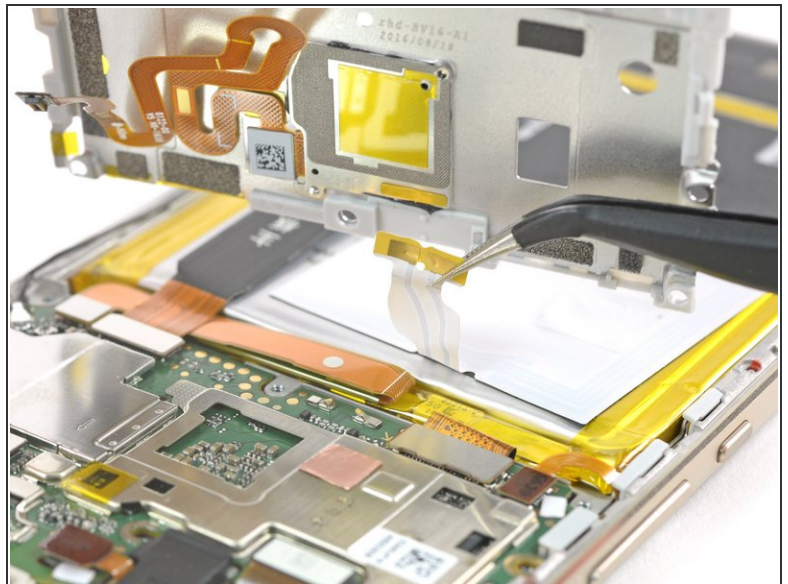
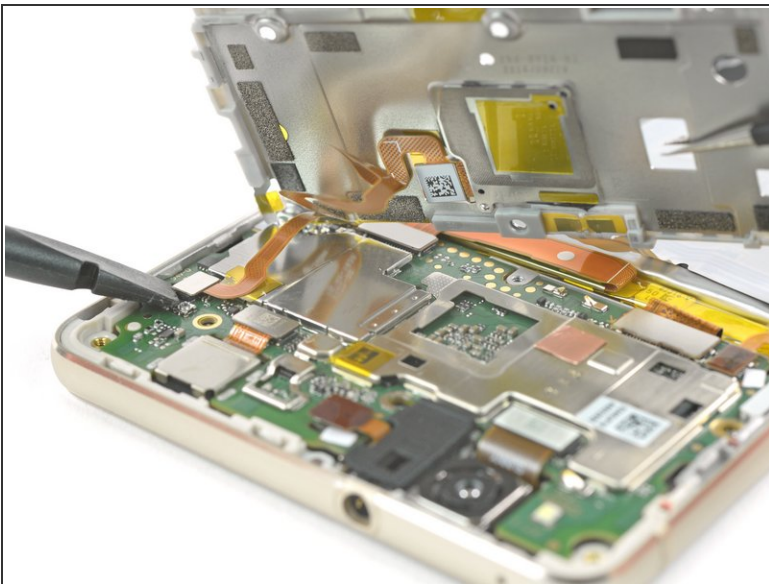
- On the bottom of the phone remove the following screws:
 - Three 2.9 mm Phillips #00 screws
 - Four 3.8 mm Phillips #00 screws
- Now you can grab the loudspeaker unit and take it out.

Step 5 — Motherboard Shield



- Remove the nine Phillips #00 screws that secure the metal shield plate.
- ⓘ Some screws may be covered with tamper proof stickers. Remove them to ensure a proper seating for your driver.

Step 6



⚠ Do not remove the shield plate yet, it is attached by a connector and an adhered cable.

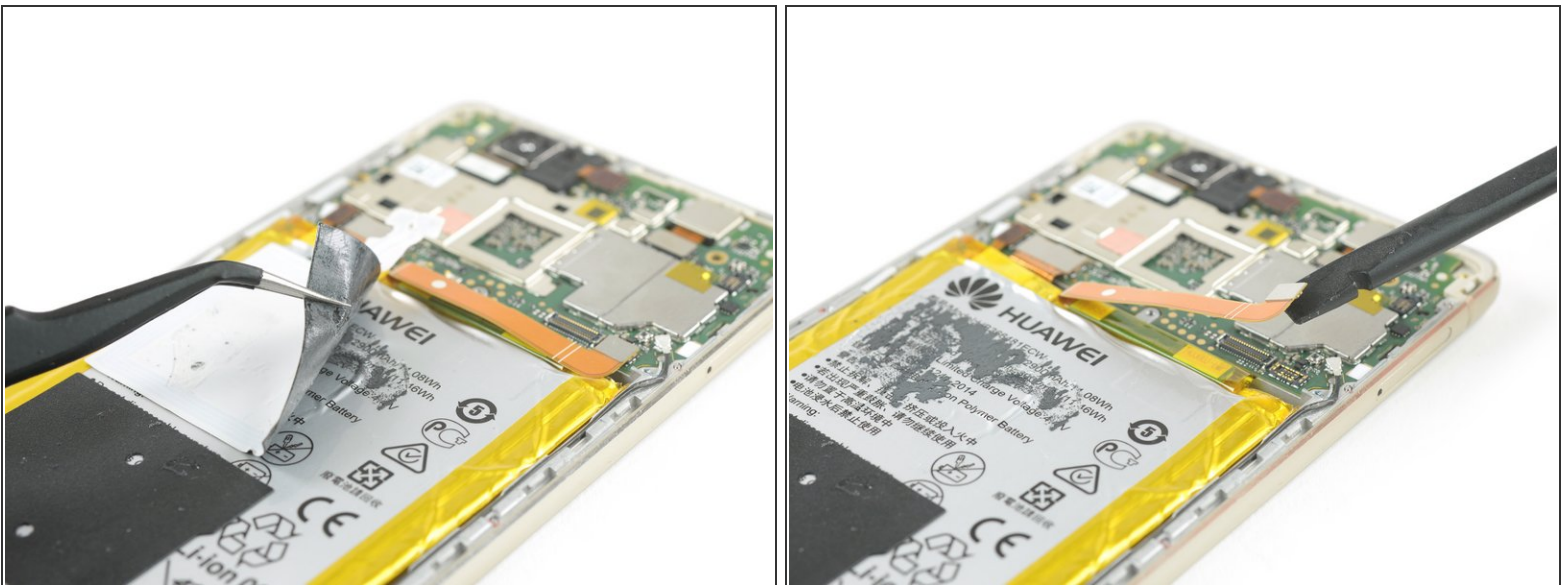
- Use a spudger to disconnect the fingerprint sensor from the motherboard.
- Peel the NFC antenna cable off of the metal plate.

Step 7 — Battery



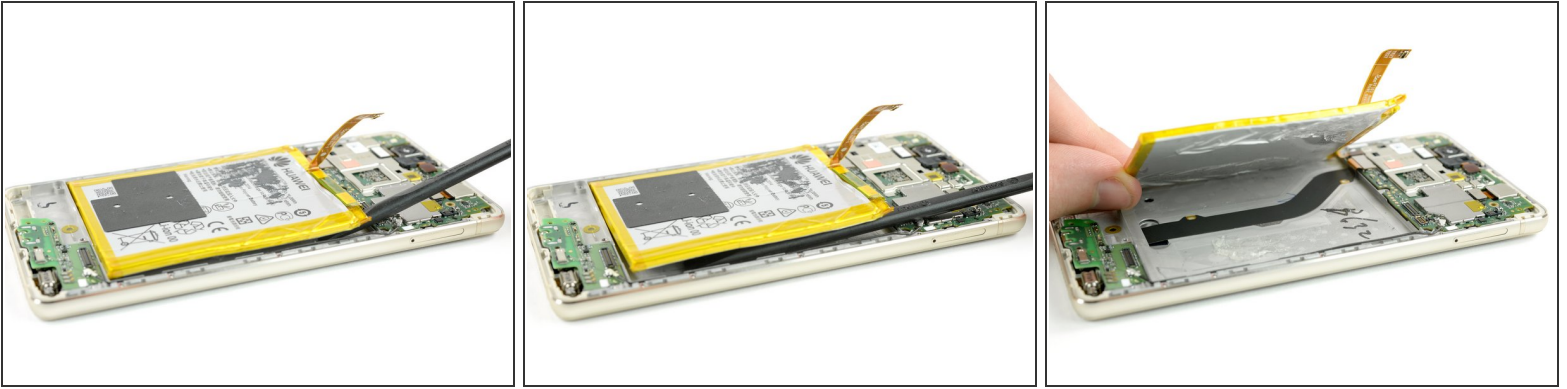
- Disconnect the motherboard flex cable on both ends and take it away.

Step 8



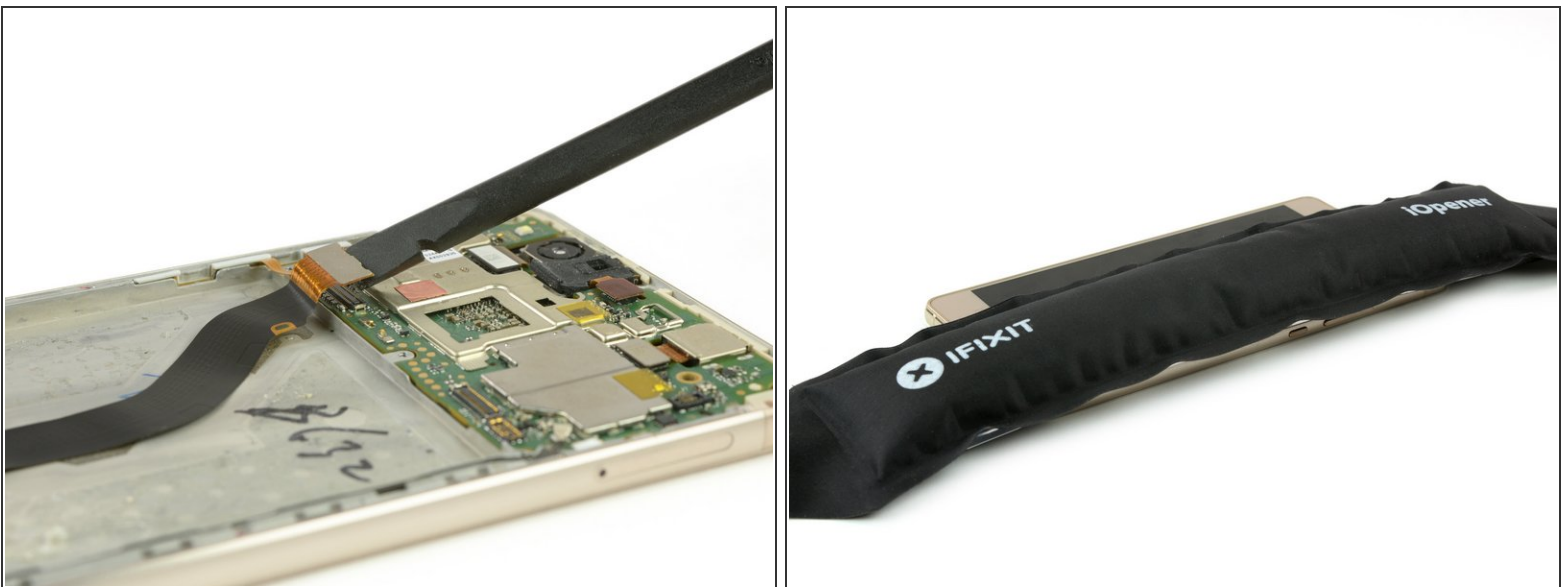
- Peel off the NFC antenna from the battery.
 - ⚠ Be careful not to rip or crease the antenna.
 - ⓘ If you are just removing the battery to get to the display, you can leave the NFC on the battery.
- Unplug the battery connector.

Step 9



- Slide the spudger under the battery at the place shown in the picture and pry it loose slowly.
 - ⚠ Avoid bending the battery and reheat if necessary.
 - ⚠ Be careful not to damage the display flex cable that runs underneath the battery in the center.
- When reassembling your phone replace old adhesive with [double-sided tape](#) or [pre-cut adhesive strips](#).

Step 10 — Display



- Take the flat end of a spudger to disconnect the display flex cable.
- Flip the phone over and [use an iOpener](#) to soften the adhesive at the edge of the display.

Step 11



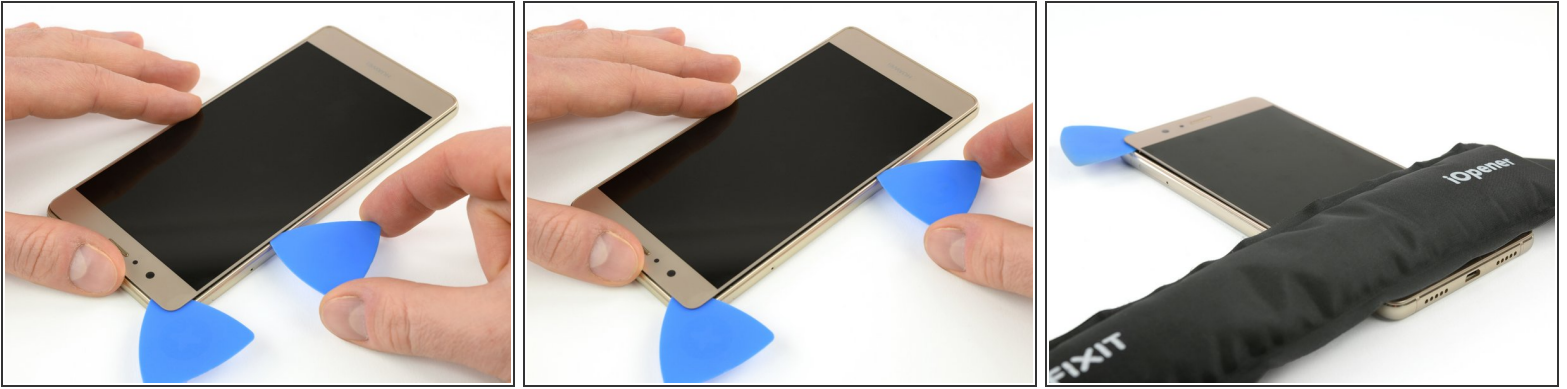
- With a suction handle you can lift the display a little bit to create a gap.
- Insert just the tip of an opening pick in the gap and steadily slide it along the edge towards the top. You may need to go back and forth a few times.
- Try to get around the corner and behind the top part of the display. Re-position the suction handle if needed.
- Leave the opening pick behind the display to avoid the re-sealing of the adhesive.


Step 12



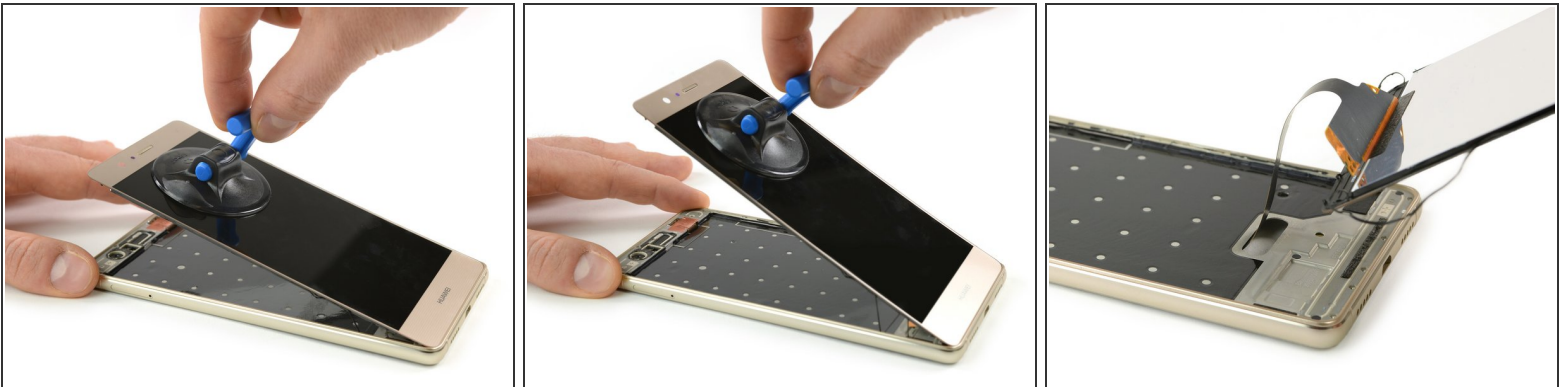
- Heat up the iOpener once again and place it on the display to soften the adhesive at the top.
- Use a second opening pick to slide along the top edge towards the next corner.


Step 13



- As long as the adhesive is warm try to continue to separate the display along the side towards the bottom. Re-heat the iOpener if necessary.
 Don't overheat the iOpener. Stick to the [iOpener instructions](#).
- Also heat up the bottom part of the display for the next few steps.

Step 14



- When you worked your way around the display, take a suction handle and lift the top part of the display away from the frame.
 - Slowly but steadily hinge open the bottom part of the display separating the adhesive.
 - Now you can thread the display flex cable through the gap in the frame.
-  When installing the new display make sure to reapply adhesive where necessary.

To reassemble your device, follow these instructions in reverse order.